

2009

1.1

1.2

1.3

1.4

1.5

.....	2
.....	3
.....	5
.....	10
.....	15
.....	26
.....	27
.....	43
.....	46
.....	50
.....	142

()

YUNNAN BAIYAO GROUP CO.,LTD

()

()

222

0871-8324159

wuwei@ yunnanbaiyao.com.cn

222

0871-8356106

zyan@ yunnanbaiyao.com.cn

0871-8324169

()

:

222

650118

www.yunnanbaiyao.com.cn

ynby@ yunnanbaiyao.com.cn

()

<http://www.cninfo.com.cn>

()

000538

()

1993 11 30

51

2000 5 4

5300001003806

53010221652214x

:

:

131

C 6

()	(:)		
	691,842,734.39		
	705,649,157.37		
		603,719,565.80	
			587,220,595.13
		460,548,807.32	
:			()

	2009	2008		2007
/	1.13	0.96	17.71	0.68
/	1.13	0.96	17.71	0.68
/	-	-	-	-
/	1.10	0.92	19.57	0.69
%	16.86	14.84	2.02	23.20
%	17.98	29.40	-11.42	25.91
%	16.40	14.13	2.27	23.40
%	17.49	28.00	-10.51	26.23
/	0.86	1.51	-42.92	0.15
	2009	2008		2007
/	6.71	5.87	14.31	2.94

()

1	534,051,138			534,051,138	
2	1,397,057,201.89	2,526,785.08	2,121,730.90	1,397,462,256.07	
3	217,704,428.06	27,569,652.05		245,274,080.11	10%
4	988,431,962.79	603,719,565.80	187,784,993.45	1,404,366,535.14	
5		-80,079.08		-80,079.08	
6	3,137,244,730.74.	633,735,923.85	189,906,724.35	3,581,073,930.24	

() ()
2009 12 31)

			+ -							
	289,214,684	54.15%	0	0	0	-239,198,468	-239,198,468	50,016,216	9.365%	
1	0	0	0	0	0	0	0	0	0	
2	239,166,027	44.78%	0	0	0	-239,166,027	-239,166,027	0	0	
3	50,000,000	9.36%	0	0	0	0	0	50,000,000	9.362%	
	50,000,000	9.36%	0	0	0	0	0	50,000,000	9.362%	
	0	0	0	0	0	0	0	0	0	
4	0	0	0	0	0	0	0	0	0	
	0	0	0	0	0	0	0	0	0	
	0	0	0	0	0	0	0	0	0	
5	48,657	0.01%	0	0	0	-32,441	-32,441	16,216	0.003%	
	244,836,454	45.85%	0	0	0	+239,198,468	+239,198,468	484,034,922	90.635%	
1	244,836,454	45.85%	0	0	0	+239,198,468	+239,198,468	484,034,922	90.635%	
2	0	0	0	0	0	0	0	0	0	
3	0	0	0	0	0	0	0	0	0	
4	0	0	0	0	0	0	0	0	0	
	534,051,138	100%						534,051,138	100%	

	221,757,229	221,757,229	0	0			2009 6 11

	1993	11	3	24		2000	(200
)		400			3.38		8000	
1993	12	15				1800		
1994	3	10	1			800		8800
	7	11				200		
1995	11			10	2	, 1760	,	10 2.7
		3.10				23.166	,	
0.10				594			35.162	11212.328
1996		1998						
1999	9	10	1			10	4	5606.164
	12		10	2		7		1763.3056
1999	12	30						18581.7976 (
		,1999				16818.492)	
2000	1	21		1763.3056		, 2000	8 3	538486
2001								
2002								
2003								
2004	6			10	3			5574.5392
2005	6			10	2			4831.2673
2006	5							
				3282.4718			10	3.5815
			10	2.2				
2006	7			10	5			16,135.0379
2007								
2008	12							5000
2009								

()

1 16325

2 10 (2009 12 31

)

		16,325			
10					
		41.52	221,757,229		
		12.32	65,813,912		
		9.36	50,000,000	50,000,000	
		3.16	16,886,959		
		1.25	6,700,000		
		1.10	5,874,904		
		1.05	5,597,801		
		0.82	4,368,702		
		0.77	4,095,165		
-005L-FH002		0.71	3,798,188		
10					
			221,757,229		
			65,813,912		
			16,886,959		
			6,700,000		

3

	50,000,000	36

4

41.52%

2002 12 09

6.6

100%

100%

1996 9 19

15

2009 4 18

:

\$\$\$
\$\$\$
(%)&

10%

12.32%

1996 1 29

56

()

		-	48	20090423-	20120423	0	0		41.71
			54	20090423-	20120423	0	0		2.76
			58	20090423-	20120423	0	0		35.69
			47	20090423-	20120423	0	0		36.2
			41	20090423-	20120423	0	0		34.75
			50	20090423-	20120423	0	0		1.38
			46	20090423-	20120423	0	0		36.92
			48	20090813	20120423	0	0		4.76
			56	20090526	20120423	0	0		7.14
			46	20090423	20120423	0	0		9.05
			66	20090423	20120423	0	0		0
			57	20090423	20120423	0	0		13.36
			43	20090423	20120423	0	0		13.47
			42	20090423	20120423	0	0		2.01
			38	20090423	20120423	0	0		11.83
			55	20090423	20120423	0	0		9.86
			54	20090423	20120423	21622	21622		31.28
			40	20090423	20120423	0	0		41.76
			46	20090423	20120423	0	0		45.66
			38	20090423	20120423	0	0		37.15

1956 4

1952 8

1963 7

()

1969 5

1960 12

CEO

1964 12

1962 5

ALBERTA

1964 3

1954 11

MPAcc

MPAcc

1944 4

1953 10

1967

1968 12

1972 3

1955 3

1970 3

1972 3

1964 12

1955 5

1965 8

1972 1

1970 6

()

2002 6 25

2002 7

2000

6000

1500

2009

5 26

2008

10000

11

“

”

()

2009 4 23

()

2009 4 23 2009

2009

2009

2009 5 26

2009

2008

2009 8 13

2009

2009

()

2009

3687

	1121	30.40		6	0.16
	1785	48.41		66	1.79
	295	8.00		927	25.14
	91	2.47		985	26.72
	395	10.71		858	23.27
				845	22.92
	3687	100.00		3687	100.00

635

()

2009

2009

“ ”

2009

()

2009

1

		()	()		
	5	5	0	0	8
	6	6	0	0	5
	8	8	0	0	4
	8	8	0	0	4

2

()

1

2

3

4

5

()

2000

2009

2009

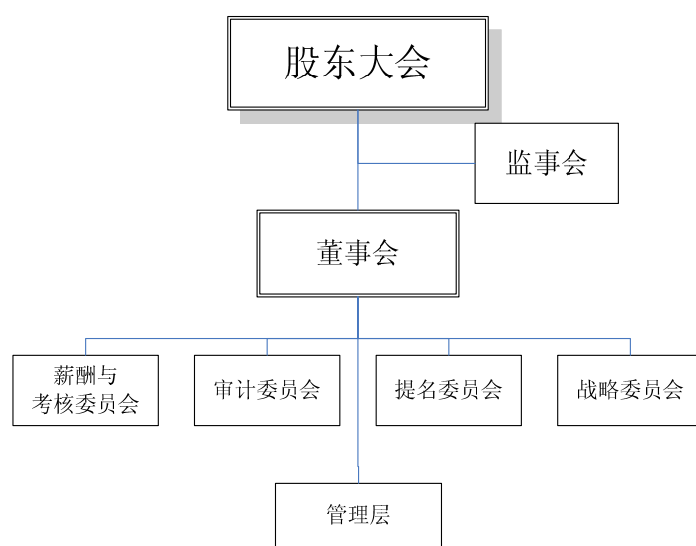
1

2009

2

2009

42



1

2

11

6

4

3

5

1

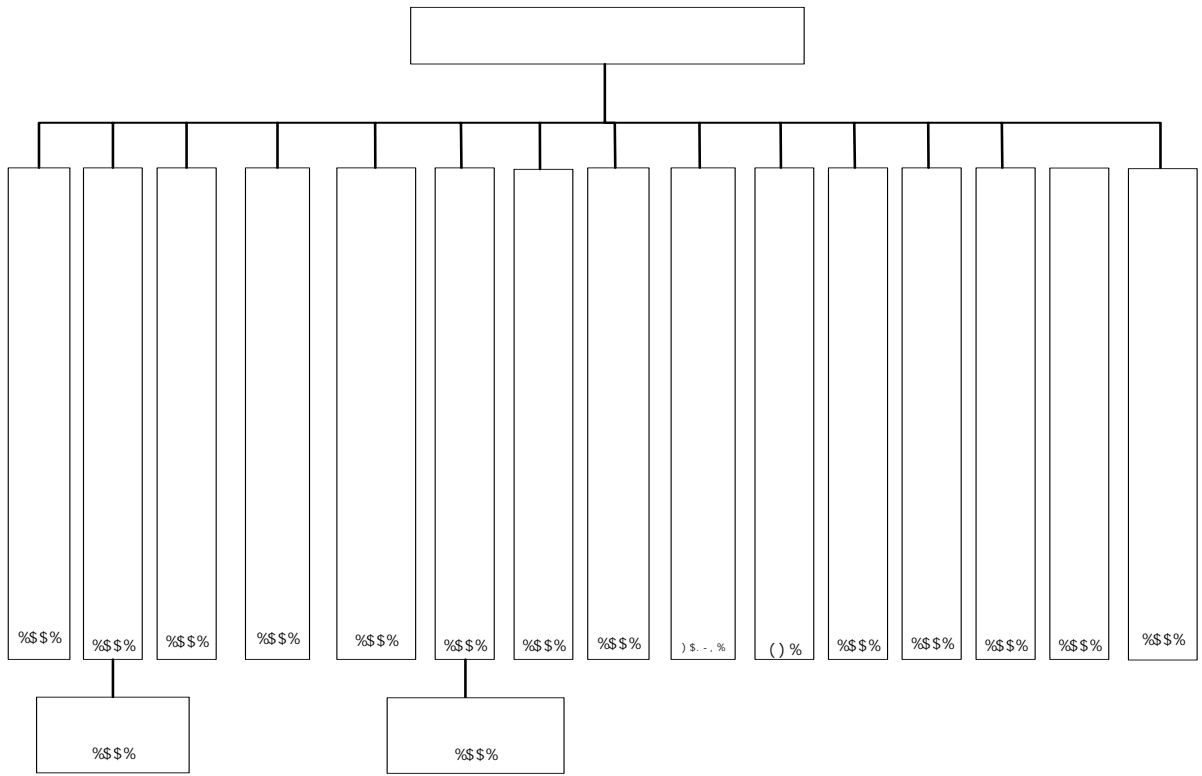
2

4

3

4

1



2

SOP

3

4

2009

5

6

—

7

8

1

1

2

3

4

5

2009

1

2

3

/

4

5

2

“ ”

3

2009 4 7
4 23 2009 2009 4 23
2009 5 24
2009 4 24
5 26 2008 2009 5 26
2009 5 27
2009 7 29
8 13 2009 2009 8 13
2009 8 14

2009

2010

2009

2009 4

11

41.52%

12

41.52%

09 12 30

“ ”

2009 “ ”

50%

1/2

2009

2009 8

—

66

11

87

55

2009

— —

2009 5 18 2009 7 7

2009 7 2009 10 26

100%

2009 12 43.24%

5.78%

7.71%

()

2009 5.5 4.2

1.3

“ ”

20 16

40 14

(“ ”)

2009

2009 6 “2009 ”

“ ”

“2009 ” “2009

” “2009 ”

“ ”

“ ”

2009 323

2009

1

2009

71.72

2003 08 57.23 14.49

25 7 6.09 08

29 142

	%	%			%
	36.06%	87.19%	258,308	68,739	73.39%
	63.90%	12.78%	457,786	429,997	6.07%
	0.04%	0.03%	298	236	20.81%
	100%	100%	716,392	498,972	30.35%

4					
2					
	15		4		
1					
(1)					
48,772	185,501		70,976		
(2)					
				1,640	
8,817	1,017				
(3)					
	3,000		45,061	26,880	
(4)					
			1,552	14,374	
6,047					
(5)	()				
0.5	35		-95		
(6)					
			1,730	6,124	
4,073					
(7)					
		2,438		5,902	4,178

		2007	12	
(8)	5000	1,742	24	
(9)	2,100	18,264		15,936
(10)				400
	45%	5,297	5,079	
(11)	2,500	8,638	6,263	
(12)				1,000
	8,429	504		
(13)		872	7,223	3,975
(14)		2,967		8,990
	6,763			
(15)	4,150	4,539	436	
	2			
(1)	138,651	2,000	1.44%,	
(2)				40,000
	1,000	2.5%		
(3)	4050	999	24.44%	
(4)	700	282	41%	

	4562	1217	1121
	6771	747	701
	3044	107	582
	65	-110	-43
	476969	11417	8558
	57365	14113	11972
	15752	6902	6915
	1562	446	379
	16345	1599	1398
	0	-119	-119
	171	-292	531
	8108	1016	1025
	10159	1066	905
	0	7	7
	0	-455	-455

2007

2.24%

309

25.61%

3

(1)

50529

10.26%

(2)

76421

10.67%

4

60,920

46,353

14,567

31.43%

1

70,565

55,525

15,040

27.09%

25.32%

2

9,645

9,172

473

5

()

	39%	
	-53%	1140
	98%	—
	58%	
	-68%	
	-100%	6
	1637%	
	42%	
	-100	—
	2009 1-12	
	-1901%	,
	-45%	
	-84%	
	2009 1-12	
	-42.92%	, , , 13% 21%
	-114.32%	136612 , 82% 45029 25799 75%

()

()2010

2010

,

2010

2009

2010

2009

2010

2009

2010

“

”

()

1

2009

			()	()	
2009-1-22	2009		11	0	2009-4-7 2009
2009-3-24	2009	< >	11	0	> < “ ”
2009-4-8	2009	2009	11	0	2009
2009-4-24	2009	2008 2008	11	0	2008 2008
2009-4-24	2009	2008	8	0	2008
2009-4-28	2009	2009	8	0	
2009-7-4	2009		9	0	
2009-8-15	2009	2009	11	0	
2009-10-24	2009	2009	11	0	
2009-12-8	2009		11	0	
2009-12-15	2009		11	0	
2009-12-26	2009		11	0	2010 2

2009

			()	()	
2009-4-24	2009		11	0	
2009-5-27	2008	2008	8	0	2008 534,051,138 10 6 26 3
2009-8-14	2009		9	0	11

3

1

2

1

A

2009

2009

B

2009

2009 12

31

2009

1

2009

2

2009

D

E

2009

2009

2009

2009

2009

F

2009

2009

2009

12

17

2009

2009 12 18

23

2009 12

30

1

2

3

4

5

6

7

8

9

2009 4 22

2009 12 31

2009

G

2009

“

”

“

”

2009

2009

2010

3

2

1

()

2010 4 22

2010

2009

742,481,671.00

2009

534,051,138.00

10

3

10

2

106,810,227.6

()

1

2009 4 22

(1)

2009 12 31

0

(2)

2009 12 31

2

[2003]56

[2005]120

2009 12 31

2009

2009

2009

2009

1 2009

2009

2009 1 20

2 2009

2009

2009 4 7

2009

()

()

()

()

1

2

3

4

()

5%

	36	

()

56

15

()

()

()

1

2009

9

10

-

65,813,912

12.32%

A

20

12 30

2
41.52%

221,757,229

2009

“ ”

“ ”

“ ”

2009.2.17				
2009.2.20			30	
2009.03.06				
2009.03.10				
2009.03.12				
2009.03.19			Martin Crie C	2008
2009.03.26				
2009.04.02			2	✍

2009.09.14			2	
2009.09.21				
2009.10.26			2	
2009.10.28			19	
2009.11.04			2	
2009.11.10				
2009.12.02			T.ROWE PRICE INTERNATIONAL,INC. 2	
2009.12.09			7	
2009.12.09				
2009.12.11			23	
2009.12.24			2	

2010 020123

2009 12 31

2009

1

2009 12 31

	1	2,283,576,312.86	2,335,333,994.33		21	10,000,000.00	21,400,000.00
	2	529,421,066.94	216,658,630.21				
	3	235,497,720.85	161,284,874.55		22	345,582,827.84	174,794,473.20
	4	243,326,730.55	326,616,938.43		23	768,607,120.00	699,126,645.66
					24	267,697,437.83	169,062,796.66
	5	26,548,831.09	1,523,244.03		25	40,802,556.58	42,769,525.85
					26	86,251,036.72	100,490,835.44
	6	41,559,805.39	145,380,151.05		27	345,040.00	284,070.00
					28	843,994.42	2,627,624.98
	7	1,649,022,365.49	1,301,637,236.42		29	670,024,797.10	517,971,308.84
	8	108,927.91					
		5,009,061,761.08	4,488,435,069.02				
	9		2,996,154.00				
						2,190,154,810.49	1,728,527,280.63
	11	36,064,806.92	36,336,909.43		30	6,684,882.14	6,684,882.14
	12	257,597,389.86	238,825,809.62				

17

374,423.10

2009 12 31

2009

		7,171,784,043.63	5,723,198,667.65
	37	7,171,784,043.63	5,723,198,667.65
		6,483,991,030.45	5,199,926,100.92
	37	4,994,856,552.69	3,957,991,073.48
	38	37,217,788.00	30,718,812.91
		1,237,368,270.36	983,476,564.83
		238,751,945.66	187,931,947.08
	39	-30,188,479.75	1,676,380.10
	40	5,984,953.49	38,131,322.52
“ ”			
“ ”	41	4,049,721.21	5,612,185.62
		-1,092,102.51	-1,766,773.27
“ ”			
“ ”		691,842,734.39	528,884,752.35
	42	16,838,333.63	30,386,608.77
	43	3,031,910.65	4,021,665.81
		806,215.41	401,080.95
“ ”		705,649,157.37	555,249,695.31
	44	96,453,929.85	91,717,872.39
“ ”		609,195,227.52	463,531,822.92
		603,719,565.80	465,420,155.48
		5,475,661.72	-1,888,332.56
	45	1.13	0.96
	45	1.13	0.96
	46	-2,201,809.98	-5,845,660.80
		606,993,417.54	457,686,162.12
		601,517,755.82	459,574,494.68
		5,475,661.72	-1,888,332.56

2009

	4	2,010,052,525.39	1,681,969,853.18
	4	781,374,753.97	616,234,465.64
		20,454,460.88	18,617,436.02
		742,046,230.28	584,264,093.36
		154,347,803.02	109,445,252.63
		-27,380,383.76	-90,005.55
		472,625.91	477,731.57
“ ”			
“ ”	5	311,511.13	118,803,561.97
		-1,092,102.51	-1,766,773.27
“ ”		339,048,546.22	471,824,441.48
		9,713,188.80	20,062,297.29
		17,528,788.01	18,396,355.73
		366,556.56	173,612.44
“ ”		331,232,947.01	473,490,383.04
		55,536,426.54	58,152,796.74
“ ”		275,696,520.47	415,337,586.30
		-2,121,730.90	-5,845,660.80
		273,574,789.57	409,491,925.50

2009

		7,388,251,045.51	6,581,157,076.06
			155,265.23
	47.1	82,914,105.70	30,004,018.24
		7,471,165,151.21	6,611,316,359.53
		5,109,659,682.69	4,232,358,251.45
		260,611,468.14	189,061,686.93
		547,362,761.86	421,197,867.43
	47.2	1,092,982,431.20	961,801,675.71
		7,010,616,343.89	5,804,419,481.52
		460,548,807.32	806,896,878.01
		500,000.00	359,641.54
		5,141,823.72	7,170,381.25
		508,263.58	230,530.01
		164,919,122.00	
		171,069,209.30	7,760,552.80
		502,345,717.86	317,760,165.02
		3,367,636.11	27,688,945.30
			50,000,001.00
		505,713,353.97	395,449,111.32
		-334,644,144.67	-387,688,558.52

2009

			1,366,120,000.00
		272,500,000.00	133,400,000.00
	47.3		
		272,500,000.00	1,499,520,000.00
		283,900,000.00	188,700,000.00
		166,393,314.85	67,154,092.28
		2,733,930.24	10,465,326.96
			2,136,000.00
		450,293,314.85	257,990,092.28
		-177,793,314.85	1,241,529,907.72
		130,970.73	
		-51,757,681.47	1,660,738,227.21
		2,335,333,994.33	674,595,767.12
	47.5	2,283,576,312.86	2,335,333,994.33

2009

		1,873,172,519.50	1,957,602,105.23
		658,989,168.63	33,834,616.32
		2,532,161,688.13	1,991,436,721.55
		499,791,000.40	408,500,222.17
		118,880,048.95	91,680,284.77
		292,183,764.27	258,107,247.93
		1,254,395,329.58	602,257,954.83
		2,165,250,143.20	1,360,545,709.70
		366,911,544.93	630,891,011.85
		500,000.00	359,641.54
		6,386,798.64	118,681,030.08
		142,466.80	46,291.42
		164,919,122.00	
		171,948,387.44	119,086,963.04
		402,274,286.62	344,098,124.70
		14,772,988.31	327,688,945.30
			50,000,001.00
		417,047,274.93	721,787,071.00
		-245,098,887.49	-602,700,107.96
			1,366,120,000.00
		262,500,000.00	110,000,000.00
		262,500,000.00	1,476,120,000.00
		262,500,000.00	147,700,000.00
		162,854,278.90	54,399,151.30
			2,136,000.00
		425,354,278.90	204,235,151.30
		-162,854,278.90	1,271,884,848.70
		-41,041,621.46	1,300,075,752.59
		1,701,440,598.98	401,364,846.39
		1,660,398,977.52	1,701,440,598.98

2009

		534,051,138.00	1,397,057,201.89			217,704,428.06		988,431,962.79			49,391,707.93	,186,636,438.67	484,051,138.00	63,763,970.11			170,937,201.17		628,441,433.59		77,578,876.45	1,424,772,619.32				
																	-382,711.08		-3,444,399.76			-3,827,110.84				
																	-3,760,025.95		3,760,025.95							
													86,646,352.22				9,376,205.29		-15,806,380.04			80,216,177.47				
		534,051,138.00	1,397,057,201.89			217,704,428.06		988,431,962.79		49,391,707.93	,186,636,438.67	484,051,138.00	150,410,322.33			176,170,669.43		612,950,679.74		77,578,876.45	1,501,161,685.95					
	"-"		405,054.18			27,569,652.05		415,934,572.35	-80,079.08	-590,745.64	443,238,453.86	50,000,000.00	1,246,646,879.56			41,533,758.63		375,481,283.05		28,187,168.52	1,685,474,752.72					
								603,719,565.80		5,475,661.72	609,195,227.52							465,420,155.48		-1,888,332.56	463,531,822.92					
			-2,121,730.90						-80,079.08		-2,201,809.98		-5,845,660.80									-5,845,660.80				
1	G		r					A	A																	

2009

2009

1971 6
1993 48
1993 5 3
1993 55
1993 11
2,000 20
400 8,000
1993 12 15
1994 7 11
1996 10
222 ()

15
2009 12 31 534,051,138
221,757,229 41.52%
100%
2010 4 22 2010

1

-

2

-

3

1 1 12 31

4

1

2

5

6

7

1

2

17 —

3

“ ”

8

1

23 —

2

3

1

2

3

4

5

A.

13 —

B.

14 —

4

1

2

5

1

100

100

100

2

9

64

142

3

4

6

100

	%
1	5
1—2	30
2—3	60
3	100

10

1

2

17 —

7 —

12 —

20 —

3

4

6

4

5

11

1

1

[

7 —

12 —

2

1

2

3

4

“18 ”

“8 ”

12

1

1

2

2

1

2

3

4

3

4 —

6 —

4

5

13

1

1

2

2

1

17 —

2

3

4

7 —

12 —

20 —

21 —

3

4

1

		%	%
	39	5	2.44
	10	5	9.5
	5	5	19
	16	5	5.94
	45	5	2.11

2

5

“ ”

“18 ”

14

17

“18 ”

15

1

1

2

3

2

3

3

1

2

16

1

1

2

3

2

1

17 —

2

3

4

7 —
16 —

12 —
20 —

3

“18 ”

17

18

1

1

2

2

3

4

19

1

1

2

3

2

;

1

2

20

1

1

2

3

4

2

1

2

3

4

3

1

2

4

21

1

2

3

1

2

22

23

1

1

2

2

1

2

3

24

1

1

75%

90%

90%

2

2

25

1

2

1

2

26

“ ”

27

1

1

2

2

50%

50%

1

1

2002 7 1

15%

“

2002 239 ”

2

25%

3

2009 1 1

15%

2009

4

“

2002 161 ”

2002 7 1

15%

5

2009 307

2009

2009

15%

6

“

2004

81

142

195 ”

15%

7

“ 2002 106 ” 2002 15%

8

“ 2002 108 ” 2003 15%

9

“ 2007 25 ” 2007 -2009

10

“ 2002 158 ” 15%

2002 7 1 15%

11

“ 2002 243 ” 15%

2002 7 1 15%

12

“ 2002 238 ” 2002 7 1 15%

13

33%

2

17% 13% 6% 3%

5%

7% 5%

3%

1%

1

(1)

					(%)	(%)	
			1,551.50	1,551.50	100.00	100.00	
		1,730.00		882.00	50.98	50.98	1,996.74
		2,438.05		4,226.06	100.00	100.00	
		3,000.00		3,000.00	100.00	100.00	
		48,771.52		48,771.52	100.00	100.00	

1,640.00	1,640.00	100.00	100.00	
400.00	1,494.20	45.00	45.00	2,793.68
2,100.00	2,100.00	100.00	100.00	
2,500.00	3,904.27	100.00	100.00	
1,000.00	1,000.00	100.00	100.00	
0.1	0.54	100.00	100.00	

(
)

:

92.29%

[2009]243

2009 12

7.71%

100%

45%

08

2009

1

“

”

“

” 2009

“

”

2

(%)

(%)

871.50

1,300.00

100.00

100.00

2,967.19

3,700.00

100.00

100.00

4,150.00

0.0001

100.00

100.00

3

(%) (%)

5,000.00

769.558

85.00

100.00

85%

15%

100.00%

2

1

()

2

100%

3

()

1

2009

12

1

0.9209

1 6.8282

“ ”

2

2008 12 31

2009 12 31

2009 1 1 12 31

2008 1 1

12 31

1

				902,181.36			443,640.00
	791.79	6.2881	4,978.86				
			2,170,265,485.81				2,323,913,011.49
	43,991.35	6.8282	300,381.73	51,781.21	6.8346		353,903.89
	19,227.46	6.2881	120,904.19				
			106,496,004.91				10,623,438.95

2

1

	529,421,066.94	216,658,630.21
	<u>529,421,066.94</u>	<u>216,658,630.21</u>

2

	2009.12.21	2010.06.21	6,500,000.00
	2010.10.21	2010.04.21	5,000,000.00
	2009.11.26	2010.02.24	4,201,466.90
	2009.12.18	2010.06.18	3,200,000.00
	2009.12.25	2010.06.25	2,513,925.40
			<u>170,544,070.59</u>
			<u>191,959,462.89</u>

684

3

1

	%		%
131,122,597.14	47.98	10,714,154.43	8.17
8,067,060.99	2.95	8,067,060.99	100.00
<u>134,098,396.48</u>	<u>49.07</u>	<u>19,009,118.34</u>	<u>14.18</u>
<u>273,288,054.61</u>	<u>100.00</u>	<u>37,790,333.76</u>	<u>13.83</u>

	%		%
78,556,574.57	40.73	10,752,428.36	13.69
4,208,431.59	2.18	4,208,431.59	100.00
<u>110,129,554.09</u>	<u>57.09</u>	<u>16,648,825.75</u>	<u>15.12</u>
<u>192,894,560.25</u>	<u>100.00</u>	<u>31,609,685.70</u>	<u>16.39</u>

	8,607,030.05	430,351.51	5%
	7,784,890.45	389,244.52	5%
	7,775,588.96	388,779.45	5%
	7,462,938.67	373,146.93	5%
	5,102,976.97	255,148.85	5%
	4,255,197.33	212,759.87	5%
	3,960,097.40	198,004.87	5%
	3,822,557.94	3,822,557.94	100%
	3,693,657.57	184,682.88	5%
	3,542,783.67	177,139.18	5%
	3,469,426.63	173,471.33	5%
	3,001,796.29	150,089.81	5%
	3,001,143.41	150,057.17	5%
	2,970,828.00	148,541.40	5%
	2,818,043.24	140,902.16	5%
	2,788,210.81	139,410.54	5%
	2,600,355.44	130,017.77	5%
	2,461,12.8227	Tw[(32332828	12.3(2 665%)2540(
	2,788,210.81	3,960,097.40	14.2%
"38£ & dÖ¥ F G=Lİ6	793222,557.50	793222,557.50	100%
"38£ & ²61Ö°Ù L\$ @ İ	793222,557.50	793222,557.50	100%

59	1,373,517.49	68,675.87	5%
	1,232,011.25	61,600.56	5%
	1,212,059.15	60,602.96	5%
	1,203,393.55	60,169.68	5%
	1,197,940.14	59,897.01	5%
	1,195,305.14	59,765.26	5%
	1,135,295.61	56,764.78	5%
()	1,092,690.80	54,634.54	5%
	1,076,292.19	53,814.61	5%
	1,074,450.12	53,722.51	5%
	1,043,651.83	52,182.59	5%
	1,040,000.00	52,000.00	5%
	1,036,485.92	51,824.30	5%
	<u>1,035,115.88</u>	<u>51,755.79</u>	5%
	<u><u>131,122,597.14</u></u>	<u><u>10,714,154.43</u></u>	

3

			%					
			%					
1	1				2,035,154.39	48.36	2,035,154.39	
1	2	2	5,308,895.39	65.81	5,308,895.39	1,189,651.04	28.27	1,189,651.04
2	3	3	1,189,651.04	14.75	1,189,651.04	983,626.16	23.37	983,626.16
3			<u>1,568,514.56</u>	<u>19.44</u>	<u>1,568,514.56</u>			
			<u><u>8,067,060.99</u></u>	<u><u>100.00</u></u>	<u><u>8,067,060.99</u></u>	<u><u>4,208,431.59</u></u>	<u><u>100.00</u></u>	<u><u>4,208,431.59</u></u>
								1

2 2 3,273,741.00 3 584,888.40

4

			%					
			%					
1	1		113,061,254.20	84.31	5,651,030.64	93,423,741.27	84.83	4,509,315.49
1	2	2	8,817,552.44	6.58	2,645,265.72	5,529,536.64	5.02	1,658,861.00
2	3	3	3,766,919.73	2.81	2,260,151.87	1,739,067.36	1.58	1,043,440.43
3			<u>8,452,670.11</u>	<u>6.30</u>	<u>8,452,670.11</u>	<u>9,437,208.82</u>	<u>8.57</u>	<u>9,437,208.83</u>
			<u><u>134,098,396.48</u></u>	<u><u>100.00</u></u>	<u><u>19,009,118.34</u></u>	<u><u>110,129,554.09</u></u>	<u><u>100.00</u></u>	<u><u>16,648,825.75</u></u>

5

69,565.42

25,707.00

21,010.32

18,014.91

16,783.20

14,826.00

14,811.18

12,769.40

12,062.56

11,171.03

83,672.46

164,550.00464,943.48

6

(%)

1	8,607,030.05	3.15
2	7,784,890.45	2.85
3	7,775,588.96	2.85
4	7,462,938.67	2.73
5	<u>5,102,976.97</u>	<u>1.87</u>
	<u><u>36,733,425.10</u></u>	<u><u>13.45</u></u>

7

5% 5%

8

		(%)	
		294,770.00	0.11
		<u>294,770.00</u>	

4

1

			%	%
1	1	236,957,267.42	97.38	
1	2	5,404,980.33	2.22	
2	3	864,663.04	0.36	
3		99,819.76	0.04	
		<u>243,326,730.55</u>	<u>100.00</u>	

			%	%
1	1	324,196,547.43	98.75	
1	2	2,192,219.36	0.67	
2	3	145,409.14	0.04	
3		1,775,181.78	0.54	1,692,419.28
		<u>328,309,357.71</u>	<u>100.00</u>	<u>1,692,419.28</u>
				95.34
				<u>0.52</u>

2

		129,297,499.00	1
		33,588,751.00	1
		27,202,535.13	1
	()	20,430,939.96	1
		<u>9,440,950.58</u>	1
		<u>219,960,675.67</u>	

3

5% 5%

4

1	<u>1,960,000.00</u>	1
	<u><u>1,960,000.00</u></u>	

5

<u>1,523,244.03</u>	<u>31,170,325.84</u>	<u>6,144,738.78</u>	<u>26,548,831.09</u>
<u><u>1,523,244.03</u></u>	<u><u>31,170,325.84</u></u>	<u><u>6,144,738.78</u></u>	<u><u>26,548,831.09</u></u>
		2009	12 31

6

1

	%		%
26,027,704.49	52.20	2,507,124.30	9.63
<u>23,834,576.23</u>	<u>47.80</u>	<u>5,795,351.03</u>	<u>24.31</u>
<u><u>49,862,280.72</u></u>	<u><u>100.00</u></u>	<u><u>8,302,475.33</u></u>	<u><u>16.65</u></u>

	%
114,030,992.02	71.6

		5,450,644.70	589,498.91	5%	30%
R Y I		4,201,331.20	210,066.56		5%
		3,040,656.11	152,032.81		5%
		2,608,216.16	130,410.81		5%
		2,568,960.00	128,448.00		5%
		1,890,638.89	94,531.94		5%
		1,555,633.89	77,781.69		5%
()		1,422,621.54	71,131.08		5%
		1,224,552.00			
		1,064,450.00	53,222.50		5%
		<u>1,000,000.00</u>	<u>1,000,000.00</u>		100%
		<u>26,027,704.49</u>	<u>2,507,124.30</u>		

3

			%			%	
1	1	16,680,335.16	69.98	823,443.73	36,480,969.96	81.49	874,048.50
1	2	1,851,534.35	7.77	577,963.90	2,880,561.10	6.43	864,168.33
2	3	2,271,908.32	9.53	1,363,145.00	943,486.00	2.11	566,091.60
3		<u>3,030,798.40</u>	<u>12.72</u>	<u>3,030,798.40</u>	<u>4,463,652.49</u>	<u>9.97</u>	<u>4,463,652.49</u>
		<u>23,834,576.23</u>	<u>100.00</u>	<u>5,795,351.03</u>	<u>44,768,669.55</u>	<u>100.00</u>	<u>6,767,960.92</u>

4

		<u>18,784.00</u>
		<u>18,784.00</u>

5

				(%)
1		5,450,644.70	1	10.93
2	R Y I	4,201,331.20	1	8.43
3		3,040,656.11	1	6.10
4		2,608,216.16	1	5.23
5		<u>2,568,960.00</u>	1	<u>5.15</u>
		<u>17,869,808.17</u>		<u>35.84</u>
6		5%	5%	

7

1

	232,552,361.35	13,419,549.52	219,132,811.83
	106,085,823.75		106,085,823.75
	19,773,297.28		19,773,297.28
	1,299,922,497.72	34,269,444.38	1,265,653,053.34
	14,345,072.10		14,345,072.10
	1,591,410.65		1,591,410.65
	22,969,372.45	528,475.91	22,440,896.54
	<u>1,697,239,835.30</u>	<u>48,217,469.81</u>	<u>1,649,022,365.49</u>

	210,432,877.23	12,982,755.71	197,450,121.52
	75,884,184.82	248,902.02	75,635,282.80
	1,032,996,683.37	34,004,757.17	998,991,926.20
	12,941,551.80	319,878.90	12,621,672.90
	1,575,360.50		1,575,360.50
	15,891,348.41	528,475.91	15,362,872.50
	<u>1,349,722,006.13</u>	<u>48,084,769.71</u>	<u>1,301,637,236.42</u>

2

	12,982,755.71	702,706.14	265,912.33	13,419,549.52
	248,902.02		248,902.02	
	34,004,757.17	3,761,580.57	3,496,893.36	34,269,444.38
	319,878.90		26,673.57	293,205.33
	528,475.91			528,475.91
	<u>48,084,769.71</u>	<u>4,464,286.71</u>	<u>26,673.57</u>	<u>4,304,913.04</u>

3

4,464,286.71

3,543,412.18

8

	108,927.91
	<u>108,927.91</u>

9

		2,996,154.00
		<u>2,996,154.00</u>
	632100	

10

						(%)
					1,100.00	41.00
					4,050.00	24.44
	(%)					
	41.00	626.00	351.00	275.00		-176.00
	24.44	3,672.57	1,686.61	1,985.96	3,610.18	149.67

11

1

	3,146,440.52	1,000,438.49	97,094.76	1,097,533.25
	9,990,000.00	5,286,470.94	-369,197.27	4,917,273.67
	50,000.00	50,000.00		50,000.00
	10,000,000.00	10,000,000.00		10,000,000.00
	<u>20,000,000.00</u>	<u>20,000,000.00</u>		<u>20,000,000.00</u>
	<u>43,186,440.52</u>	<u>36,336,909.43</u>	<u>-272,102.51</u>	<u>36,064,806.92</u>

	(%)	(%)			
	41.00	41.00			
	24.44	24.44			
	2.50	2.50			
	1.44	1.44			

820,000.00

41%

12

	283,122,574.05	1,187,680.39	158,150.94	284,152,103.50
	277,076,434.26	39,271,123.93	3,277,510.42	313,070,047.77
	19,937,184.27	1,395,045.00	1,763,611.00	19,568,618.27
	17,588,776.70	3,146,427.08	1,946,750.49	18,788,453.29
	4,797,967.73	374,303.67	95,452.19	5,076,819.21
	<u>602,522,937.01</u>	<u>45,374,580.07</u>	<u>7,241,475.04</u>	<u>640,656,042.04</u>
	82,445,563.81	6,546,432.07	54,567.36	88,937,428.52
	169,779,032.01	13,631,481.52	2,364,153.26	181,046,360.27
	12,786,477.45	1,351,784.26	1,469,829.00	12,668,432.71
	9,637,828.37	3,589,566.93	1,851,066.62	11,376,328.68
	2,781,724.84	480,802.46	90,821.61	3,171,705.69
	<u>277,430,626.48</u>	<u>25,600,067.24</u>	<u>5,830,437.85</u>	<u>297,200,255.87</u>

	200,677,010.24	-5,358,751.68	103,583.58	195,214,674.98
	107,297,402.25	25,639,642.41	913,357.16	132,023,687.50
	7,150,706.82	43,260.74	293,782.00	6,900,185.56
	7,950,948.33	-443,139.85	95,683.87	7,412,124.61
	<u>2,016,242.89</u>	<u>-106,498.79</u>	<u>4,630.58</u>	<u>1,905,113.52</u>
	<u>325,092,310.53</u>	<u>19,774,512.83</u>	<u>1,411,037.19</u>	<u>343,455,786.17</u>
	71,654,574.22			71,654,574.22
	13,438,949.78		225,277.06	13,213,672.72
	753,197.22		182,827.54	570,369.68
	419,779.69			419,779.69
	<u>86,266,500.91</u>	<u></u>	<u>408,104.60</u>	<u>85,858,396.31</u>
	129,022,436.02	-5,358,751.68	103,583.58	123,560,100.76
	93,858,452.47	25,639,642.41	688,080.10	118,810,014.78
	6,397,509.60	43,260.74	110,954.46	6,329,815.88
	7,531,168.64	-443,139.85	95,683.87	6,992,344.92
	<u>2,016,242.89</u>	<u>-106,498.79</u>	<u>4,630.58</u>	<u>1,905,113.52</u>
	<u>238,825,809.62</u>	<u>19,774,512.83</u>	<u>1,002,932.59</u>	<u>257,597,389.86</u>
①				
②	25,600,067.24			32,252,655.20
③				
④				
	<u>8,795,937.60</u>	<u>3,980,693.41</u>	<u>4,266,113.97</u>	<u>549,130.22</u>
	<u>8,795,937.60</u>	<u>3,980,693.41</u>	<u>4,266,113.97</u>	<u>549,130.22</u>

13

1

GMP	1,976,885.00	1,976,885.00	2,265,685.00	2,265,685.00
			1,771,886.52	1,771,886.52
	225,095,721.92	225,095,721.92	10,530,733.81	10,530,733.81
	721,376.26	721,376.26	26,294,633.20	26,294,633.20
	2,380,306.45	2,380,306.45	270,000.00	270,000.00
			2,965,584.20	2,965,584.20
			800,000.00	800,000.00
	4,456,400.65	4,456,400.65		
	8,744,000.25	8,744,000.25		
	243,374,690.53	243,374,690.53	44,898,522.73	44,898,522.73

2

			4,456,400.65	
	25,970.00		8,744,000.25	
		270,000.00	2,110,306.45	
	133,700.00	10,530,733.81	239,879,720.59	25,314,732.48
		800,000.00	209,345.36	1,009,345.36
	25,970.00	11,600,733.81	255,399,773.30	26,324,077.84

	(%)	(%)		(%)
				4,456,400.65
	3.37	3.37		8,744,000.25
				2,380,306.45
	18.73	18.73		225,095,721.92
	100.00	100.00		
				<u>240,676,429.27</u>

①

②

14

	55,380,301.73	323,825,720.61	379,206,022.34
	37,490.00		37,490.00
	1,190,067.92	98,681.00	1,288,748.92
	17,714,401.64		17,714,401.64
	1,281,381.86		1,281,381.86
	812,524.60		

	49,990,988.73	319,715,161.84		369,706,150.57
	8,849.04	-2,957.62		5,891.42
	692,827.83	-55,600.28		637,227.55
	16,146,910.52	-783,745.56		15,363,164.96
	726,116.50	-128,138.16		597,978.34
	562,517.08	-125,003.76		437,513.32
	212.47	-170.00		42.47
	<u>68,128,422.17</u>	<u>318,619,546.46</u>		<u>386,747,968.63</u>
	<u>9,256,480.80</u>			<u>9,256,480.80</u>
	<u>9,256,480.80</u>			<u>9,256,480.80</u>
	49,990,988.73	319,715,161.84		369,706,150.57
	8,849.04	-2,957.62		5,891.42
	692,827.83	-55,600.28		637,227.55
	6,890,429.72	-783,745.56		6,106,684.16
	726,116.50	-128,138.16		597,978.34
	562,517.08	-125,003.76		437,513.32
	212.47	-170.00		42.47
	<u>58,871,941.37</u>	<u>318,619,546.46</u>		<u>377,491,487.83</u>

①			997.44	
299,230,076.00	8,976,902.28	308,206,978.28	2009	6
	2009	0221	f	

②

16

5,865,958.98	4,413,187.03	4,283,526.55	108,927.91	5,886,691.55
111,052.82		12,631.56		98,421.26
<u>19,984.00</u>	<u>380,957.00</u>	<u>68,164.96</u>		<u>332,776.04</u>
<u><u>5,996,995.80</u></u>	<u><u>4,794,144.03</u></u>	<u><u>4,364,323.07</u></u>	<u><u>108,927.91</u></u>	<u><u>6,317,888.85</u></u>

17

/

1

22,160,810.13	19,600,074.24
4,480,349.38	3,951,196.00
11,616,462.43	1,615,763.92
5,564,376.00	8,528,948.16
1,488,166.31	3,114,773.43
883,758.22	1,153,758.22
68,625.00	
6,334,425.39	
<u>52,596,972.86</u>	<u>37,964,513.97</u>
	374,423.10
	<u>374,423.10</u>

2

36,328,069.66	57,039,266.65
<u>12,065,277.16</u>	<u>55,729,674.13</u>
<u><u>48,393,346.82</u></u>	<u><u>112,768,940.78</u></u>

3

2010	6,431,530.86	6,431,530.86
2011 2014	5,633,746.30	5,351,411.96
	<u>12,065,277.16</u>	<u>11,782,942.82</u>

4

33,967,775.82
7,358,687.36
16,655,746.06
75,124,754.22
4,239,565.84
30,074,456.28
56,358,054.63
37,095,839.99
6,445,279.54
5,891,721.46
457,500.00
<u>25,905,676.26</u>
<u>299,575,057.46</u>

18

<u>10,000,000.00</u>	<u>10,000,000.00</u>
<u>10,000,000.00</u>	<u>10,000,000.00</u>

19

46,721,615.50	1,931,870.20	384,529.85	2,176,146.76	46,092,809.09
48,084,769.71	4,464,286.71	26,673.57	4,304,913.04	48,217,469.81

2008		5 9		200424761	
				11,400,000.00	2008
6	19	2009	5 31		
22					
				345,582,827.84	174,794,473.20
				345,582,827.84	174,794,473.20

①

②

345,582,827.84

23

1		1	755,289,269.21	672,730,136.49
1	2	2	5,936,152.67	24,305,425.62
2	3	3	6,010,360.81	1,241,245.24
3			1,371,337.31	849,838.31
			768,607,120.00	699,126,645.66

①

5% 5%

②

“ ”

③

1 13,317,850.79

24

1		1	266,329,235.19	167,908,351.48
1	2	2	716,573.21	950,321.71
2	3	3	538,776.24	136,730.13

25

13,732,953.72

168,723,959.55

165,915,606.16

16,541,307.11

28

			1
	843,994.42	843,994.42	
		<u>1,783,630.56</u>	
	<u>843,994.42</u>	<u>2,627,624.98</u>	

29

1	1	569,993,031.26	356,990,013.14
1	2		

① 1,000,000.00

② 1,000,000.00

③ 35401
2,500,000.00

④ 2002 9 28
2,184,882.14

“GMP” 2002 9 30 —2005 9 30
2003 9 30 584,882.14 2004 9 30 800,000.00 2005 9 30
800,000.00 2009 12 31

31

1

	%	
		4,599,793.00
		215,039.43
		130,000.00
		<u>4,944,832.43</u>

32

	173,689,241.96	10,001,720.59
	<u>173,689,241.96</u>	<u>10,001,720.59</u>

163,687,521.37 ① 2009 12

21,600,000.00 6 2 2

3 4600 5

② 115,419,122.00

③

27,900,000.00

33

			+ -			
	289,214,684	54.155%				
1			-239,198,468	-239,198,468	50,016,216	9.365%
2	239,166,027	44.783%				
			-239,166,027	-239,166,027		
3	50,048,657	9.372%				
			-32,441	-32,441	50,016,216	9.365%
	50,000,000	9.362%				
	48,657	0.009%				
4			-32,441	-32,441	16,216	0.003%
	244,836,454	45.845%				
1	244,836,454	45.845%	239,198,468	239,198,468	484,034,922	90.635%
			239,198,468	239,198,468	484,034,922	90.635%

2009 6 11
 221,757,229 17,408,798 44.75%

34

	1,376,698,227.99			1,376,698,227.99
	<u>20,358,973.90</u>	<u>2,526,785.08</u>	<u>2,121,730.90</u>	<u>20,764,028.08</u>
	<u>1,397,057,201.89</u>	<u>2,526,785.08</u>	<u>2,121,730.90</u>	<u>1,397,462,256.07</u>
①	2,526,785.08	,		

② 632,100 ,

35

	175,039,357.81	27,569,652.05		202,609,009.86
	42,665,070.25			42,665,070.25
	<u>217,704,428.06</u>	<u>27,569,652.05</u>		<u>245,274,080.11</u>

36

		988,431,962.79		
	+ -			
		<u>988,431,962.79</u>		
		603,719,565.80		
		27,569,652.05		10%
		160,215,341.40		
		<u>1,404,366,535.14</u>		

①	2009	5	26	2008	534,051,138
			10	3.00	160,215,341.40
②	2010	4	22	2010	2009
	2009	12	31	534,051,138	
10	3		10	2	106,810,227.60
③				603,719,565.80	
	1,404,366,535.14			275,696,520.47	
	742,481,671.00				
④					

2006	48,405,113.80	252,880,427.25	208,485,300.10
2007	48,405,113.80	330,209,797.00	222,747,915.34
2008	<u>160,215,341.40</u>	<u>465,420,155.48</u>	<u>415,337,586.30</u>
	<u>257,025,569.00</u>	<u>1,048,510,379.73</u>	<u>846,570,801.74</u>

349,503,459.91

73.54%

282,190,267.25

91.08%

⑤

		%	
	1,121,287.43	100	1,121,287.43
	581,907.22	50.98	296,656.30
	700,792.43	100	700,792.43
	11,971,538.97	100	11,971,538.97
	8,346,597.00	100	8,346,597.00
		100	
	416,864.86	45	187,589.19
		100	
	6,914,891.51	100	6,914,891.51
	1,411,006.23	100	1,411,006.23
		100	
		100	
	904,552.38	100	904,552.38

		%	
	1,025,280.27	100	1,025,280.27
		100	
()		100	
	<u>33,394,718.30</u>		<u>32,880,191.71</u>

37

1

	7,163,927,674.90		5,714,091,072.09
	7,856,368.73		9,107,595.56
	<u>7,171,784,043.63</u>		<u>5,723,198,667.65</u>
	4,989,715,556.28		3,952,285,984.09
	5,140,996.41		5,705,089.39
	<u>4,994,856,552.69</u>		<u>3,957,991,073.48</u>

2

	2,583,083,249.26	687,390,401.81	2,119,408,413.48	599,371,661.48
	<u>4,580,844,425.64</u>	<u>4,302,325,154.47</u>	<u>3,594,682,658.61</u>	<u>3,352,914,322.61</u>
	<u>7,163,927,674.90</u>	<u>4,989,715,556.28</u>	<u>5,714,091,072.09</u>	<u>3,952,285,984.09</u>

3

	2,583,083,249.26	687,390,401.81	2,119,408,413.48	599,371,661.48
	4,577,862,552.10	4,299,969,325.63	3,589,035,588.54	3,349,334,076.19
	<u>2,981,873.54</u>	<u>2,355,828.84</u>	<u>5,647,070.07</u>	<u>3,580,246.42</u>
	<u>7,163,927,674.90</u>	<u>4,989,715,556.28</u>	<u>5,714,091,072.09</u>	<u>3,952,285,984.09</u>

4

	7,142,808,869.09	4,982,189,399.65	5,697,720,592.61	3,946,396,381.95
	21,118,805.81	7,526,156.63	16,370,479.48	5,889,602.14
	<u>7,163,927,674.90</u>	<u>4,989,715,556.28</u>	<u>5,714,091,072.09</u>	<u>3,952,285,984.09</u>

5
10.67%

764,209,851.72

305,707.40	294,450.09	5%
22,482,965.49	21,106,655.63	7% 5%
14,284,838.07	9,263,353.70	3% 1%
144,000.00	48,000.00	12%

41

1

		500,000.00	7,000,000.00
		-1,092,102.51	-1,766,773.27
			206,984.68
		63,210.00	170,381.25
		4,578,613.72	
			1,592.96
		<u>4,049,721.21</u>	<u>5,612,185.62</u>

2

	<u>500,000.00</u>	<u>7,000,000.00</u>	
	<u>500,000.00</u>	<u>7,000,000.00</u>	
3			
	<u>-722,905.24</u>	<u>-809,355.05</u>	
	<u>-369,197.27</u>	<u>-876,418.22</u>	
	<u>-1,092,102.51</u>	<u>-1,766,773.27</u>	

42

1		524,313.01	337,290.46
		524,313.01	337,290.46
2			
3			1,290,523.50
4		14,798,708.20	27,461,016.09
5			
6			
7		<u>1,515,312.42</u>	<u>1,297,778.72</u>
		<u>16,838,333.63</u>	<u>30,386,608.77</u>

		272,000.00	
ERP		94,935.80	
GAP		830,092.00	
	696,176.00		
	14,000.00		
	192,568.20		
	8,452,400.00	4,863,822.84	
		500,000.00	
	10,000.00		
		180,000.00	
	14,500.00	30,500.00	
	360,000.00		

43

1	806,215.41	401,080.95
	806,215.41	401,080.95
2		
3	134,091.35	
4	1,176,514.35	2,182,727.15
5	79,063.68	
6	119,890.02	
7	716,135.84	1,437,857.71
	<u>3,031,910.65</u>	<u>4,021,665.81</u>

44

	111,086,388.74	109,360,233.77
	-14,632,458.89	-17,642,361.38
	<u>96,453,929.85</u>	<u>91,717,872.39</u>

45

1

=P0÷S

S= S0 S1 Si×Mi÷M0- Sj×Mj÷M0-Sk

	S0	S1	
P0			
S	Si	M0	Mi
	Sk	Mj	Sj
		2009	2008
P		603,719,565.80	465,420,155.48
S		534,051,138.00	484,051,138.00
=P÷S		<u>1.13</u>	<u>0.96</u>

2

=P1/ S0 S1 Si×Mi÷M0-Sj×Mj÷M0-Sk+

P1

46

1.		-6,877,248.00
		-1,031,587.20
	2,121,730.90	
	<u>-2,121,730.90</u>	<u>-5,845,660.80</u>
2.		
3.		
4.	-80,079.08	
	<u>-80,079.08</u>	
5.		
	<u>-2,201,809.98</u>	<u>-5,845,660.80</u>
47		
1		

32,729,683.91

23,890,568.58

14,491,640.00

889,763.3072,001,655.79

2

503,415,063.33

249,939,577.57

24,397,066.66

16,975,940.55



4

1		609,195,227.52	463,531,822.92
		5,984,953.49	38,131,322.52
		25,600,067.24	29,559,384.72
		5,304,855.15	2,561,989.87
		4,364,323.07	4,630,420.95
	“_”	-77,539.68	222,787.82
	“_”	359,442.08	-158,997.33
	“_”		
	“_”	3,505,013.21	8,349,321.52
	“_”	-4,049,721.21	-5,612,185.62
	“_”	-14,632,458.89	-17,642,361.38
	“_”		
	“_”	-351,822,742.21	-255,175,393.78
	“_”	-262,981,887.47	281,145,501.59
	“_”	439,799,275.02	257,353,264.21
		<u>460,548,807.32</u>	<u>806,896,878.01</u>
2			
3		2,283,576,312.86	2,335,333,994.33
		2,335,333,994.33	674,595,767.12
		<u>-51,757,681.47</u>	<u>1,660,738,227.21</u>

5

	<u>2,283,576,312.86</u>	<u>2,335,333,994.33</u>
	907,160.22	443,640.00
	2,170,686,771.73	2,324,266,915.38
	111,982,380.91	10,623,438.95
	<u>2,283,576,312.86</u>	<u>2,335,333,994.33</u>

1

			(%)	(%)	
		150,000.00		41.52	21654704-8
		66,000.00	41.52	41.52	74526022-9

2

			(%)	(%)	
				100	21867155-2
				50.98	70989394-2
				100	21920052-5
				100	71940396-X

		(%)	(%)	
	48,771.52	100	100	73431220-6
	1,640.00	100	100	21658389-0
	400.00	45	45	62260324-4
	500.00		100	70325378-4
	2,100.00	100	100	73806618-8
	2,500.00	100	100	752739561
	1,000.00	100	100	78736336-5
	4,000.00		100	74148572-X
	5,000.00	85	100	74528713-0
	61.00		50.98	74528287-4

4

431201496

5

(1)

					%		%
			1	2,000,000.00	100		
			2	11,000,193.13	0.17	8,165,945.95	0.13
			3	731,589.74	0.01	871,094.00	0.05
1							3,960,000.00

2009 12 31
2,000,000.00

2

11,000,193.13

3

6,113.9039 119.66 /

(2)

110,259,735.81

1 2009 12 19

()

,

21 162 67
2010
2012 2015 30%

2010 4 22 2010 2009
742,481,671.00 2009 534,051,138.00
10 3 10 2
106,810,227.60

1

1.

2. 2,996,154.00 _____
2,996,154.00 _____

3. 2,996,154.00 _____

632,100

2

1

[2006]267 “

”

5-8.33%

10

2009 12 31

2

2009 79

2008 204

8.33%

10

2009 12 31

3

[2009] 98

[2009]420

[2010]392

41.52%

4 2009 7 3

“ ”

215/0504/0010-1

469,357.19 (704)

215/0504/0010-2

195,604.07 (293)

308,206,978.28 (

299,230,076.00 8,976,902.28)

1

1

		%		%
	44,051,217.60	68.28	2,202,560.87	5.00
	20,460,839.51	31.72	1,926,705.01	9.42
	<u>64,512,057.11</u>	<u>100.00</u>	<u>4,129,265.88</u>	<u>6.40</u>
		%		%
	17,546,451.73	27.58	877,322.59	5.00
	46,082,314.77	72.42	1,064,394.42	2.31
	<u>63,628,766.50</u>	<u>100.00</u>	<u>1,941,717.01</u>	<u>3.05</u>

2

	5,102,976.97	255,148.85	5%
	3,693,657.57	184,682.88	5%
	3,542,783.67	177,139.18	5%
	3,001,796.29	150,089.81	5%
	2,970,828.00	148,541.40	5%
	2,818,043.24	140,902.16	5%
	2,600,355.44	130,017.77	5%
	2,461,172.08	123,058.60	5%
	2,418,869.75	120,943.49	5%
	2,178,998.68	108,949.93	5%
	2,099,991.70	104,999.59	5%
	2,033,452.54	101,672.63	5%
	1,913,631.68	95,681.58	5%
	1,622,695.60	81,134.78	5%

					5,423.65
					4,513.94
	()				3,809.72
					3,412.00
					1,556.19
					1,031.62
					<u>3,668.52</u>
					<u><u>316,634.52</u></u>

5

					(%)
1				5,102,976.97	7.91
2				3,693,657.57	5.73
3				3,542,783.67	5.49
4				3,001,796.29	4.65
5				<u>2,970,828.00</u>	<u>4.61</u>
				<u><u>18,312,042.50</u></u>	<u><u>28.39</u></u>

6

5% 5%

7

(%)

891,120.55

	62,215,940.88			
	52,013,238.80			
	22,752,467.04			
	20,298,577.79			
	10,000,150.00			
	5,450,644.70	589,498.91	5%	30%
RVI	4,201,331.20	210,066.56	5%	
	2,608,216.16	130,410.81	5%	
.	2,568,960.00	128,448.00	5%	
	1,890,638.89	94,531.94	5%	

5

			(%)
1		62,215,940.88	31.27
2		52,013,238.80	26.14
3		22,752,467.04	11.44
4		20,298,577.79	10.20
5		<u>10,000,150.00</u>	<u>5.03</u>
		<u><u>167,280,374.51</u></u>	<u><u>84.20</u></u>

6

1		62,215,940.88
2		52,013,238.80
3		22,752,467.04
4		20,298,577.79
5		10,000,150.00
6		1,439,974.90
7		<u>250,000.00</u>
		<u><u>168,970,349.41</u></u>

168,970,349.41

16,400,000.00	16,400,000.00		16,400,000.00
30,000,000.00	30,000,000.00		30,000,000.00
10,000,000.00	10,000,000.00		10,000,000.00
21,000,000.00	21,000,000.00		21,000,000.00
5,000,000.00	5,000,000.00	-5,000,000.00	
39,042,733.25	39,042,733.25		39,042,733.25
15,515,000.00	15,515,000.00		15,515,000.00
42,260,644.37	39,713,008.26	2,547,636.11	42,260,644.37
8,820,000.00	8,820,000.00		8,820,000.00
14,941,951.11	14,941,951.11		14,941,951.11
195,580.00	195,580.00		195,580.00
54,747,389.86	54,747,389.86		54,747,389.86
23,524,176.54	23,524,176.54		23,524,176.54
204,262.48	204,262.48		204,262.48
487,715,229.16	487,715,229.16		487,715,229.16
5,352.20		5,352.20	5,352.20
2,326,440.52	1,000,438.49	97,094.76	1,097,533.25
9,990,000.00	5,286,470.94	-369,197.27	4,917,273.67
50,000.00	50,000.00		50,000.00
10,000,000.00	10,000,000.00		10,000,000.00
<u>20,000,000.00</u>	<u>20,000,000.00</u>		<u>20,000,000.00</u>
<u>809,185,771.18</u>	<u>803,156,240.09</u>	<u>-2,719,114.20</u>	<u>800,437,125.89</u>

	(%)				
	100	100			
	100	100			
	100	100			
	100	100			
		100			
	100	100			
	100	100			
	100	100			
	50.98	50.98			
	45	45			777,517.92
	85	100			
	100	100			
	100	100			
	100	100			
	100	100			
	100	100			
	41	41			
	24.44	24.44			
	2.5	2.5			500,000.00
	1.44	1.44			
					<u>1,277,517.92</u>

①

1000

2009

② 2009 12

7.71%

100%

③ 2008

73

2008

41

82

2009

4

1,942,962,629.82	733,460,535.99	1,652,792,523.50	597,328,360.49
21,118,805.81	7,526,156.63	16,370,479.48	5,889,602.14
1,964,081,435.63	740,986,692.62	1,669,163,002.98	603,217,962.63

5

1

	1,277,517.92	120,192,969.31
	-1,092,102.51	-1,766,773.27
	-5,000,000.00	206,984.68
	63,210.00	170,381.25
	4,578,613.72	
	484,272.00	
	311,511.13	118,803,561.97

2

	500,000.00	7,000,000.00
	777,517.92	1,394,634.86
		100,000,000.00
		11,798,334.45
	1,277,517.92	120,192,969.31

3

	-722,905.24	-809,355.05
	-369,197.27	-876,418.22
	-1,092,102.51	-1,766,773.27

①
②
5,000,000.00

100%

6

1		275,696,520.47	415,337,586.30
		472,625.91	477,731.57
		8,863,234.17	9,425,283.23
		4,025,435.71	1,419,821.16
		1,371,857.67	12,631.56
	“_”	-321,504.01	46,496.61
	“_”	324,060.57	-173,213.89
	“_”		
	“_”	2,638,937.50	8,940,467.51
	“_”	-311,511.13	-118,803,561.97
	“_”	1,158,510.48	-523,408.24
	“_”		-1,031,587.20
	“_”	-82,950,190.54	-33,496,776.69
	“_”	-316,018,751.88	-265,361,434.61
	“_”	471,962,320.01	614,620,976.51
		<u>366,911,544.93</u>	<u>630,891,011.85</u>
2			
3		1,660,398,977.52	1,701,440,598.98
		1,701,440,598.98	401,364,846.39
		<u>-41,041,621.46</u>	<u>1,300,075,752.59</u>

1

-281,902.40

14,798,708.20

-134,091.35

4,578,613.72

-576,291.47

18,385,036.70

1,702,602.76

183,463.27

16,498,970.67

	%		
	17.98	1.13	1.13
	17.49	1.10	1.10

: ①

$$= P_0 / E_0 \cdot NP \div 2 \cdot E_i \times M_i \div M_0 - E_j \times M_j \div M_0 \pm E_k \times M_k \div M_0$$



7	198,476,167.80	442.06%
8	318,619,546.46	541.21%
9	14,632,458.89	38.54%
10	11,400,000.00	53.27%
	11,400,000.00	
11	170,788,354.64	97.71%
12	98,634,641.17	58.34%
13	1,783,630.56	67.88%
14	374,423.10	100.00%
15	163,687,521.37	1636.59%
16	31,864,859.85	1900.81%
17	32,146,369.03	84.3%
18	13,548,275.14	44.59%

()

()

()